

Biodegradable grease for total loss applications

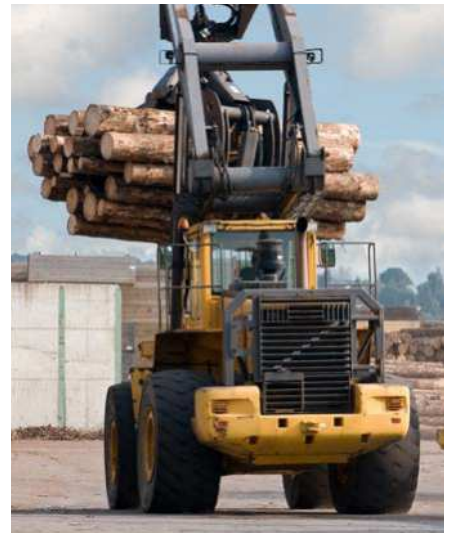
LGTE 2

LGTE 2 is grease for total loss applications based on biodegradable esters and anhydrous calcium thickener. The grease is environmentally acceptable and certified with Ecolabel, making it the ideal grease for marine applications such as wire ropes.

- Biodegradable and categorized as “Total loss lubricant (TLL)” as defined by Ecolabel
- Environmentally acceptable lubricant according to “2013 Vessel General Permit”
- Excellent pumpability at low to medium temperatures
- Excellent adhesion to surfaces
- Excellent water resistance
- High load capacity

Typical applications

- Wire ropes
- Marine
- Construction equipment
- Forestry and agricultural equipment
- Heavy duty off-road application
- Plain bearings and bushings



Available pack sizes

Packsize	Designation
18 kg pail	LGTE 2/18

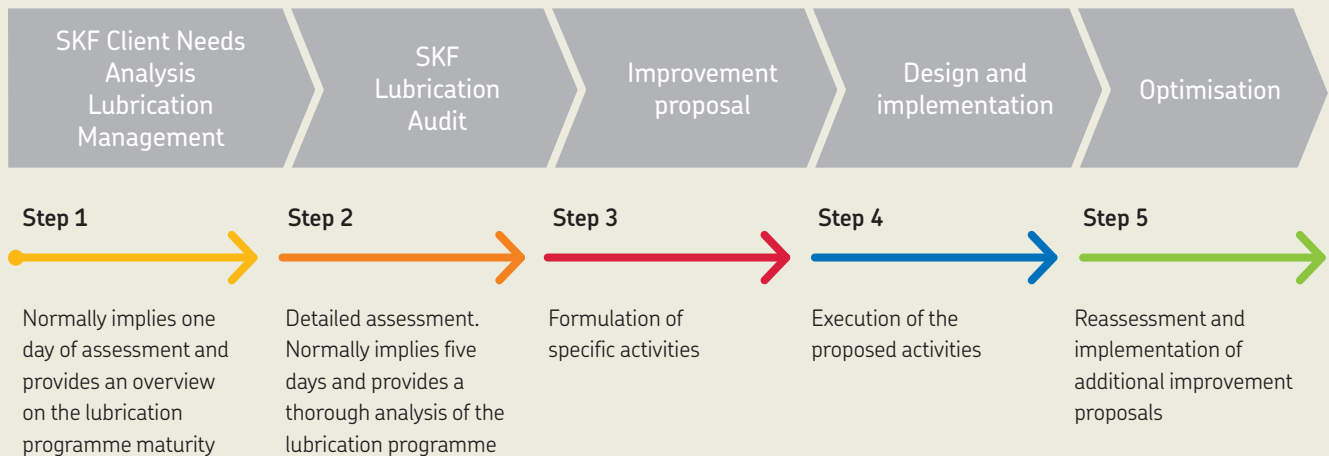


Technical data

Designation	LGTE 2/(pack size)		
DIN 51825 code	KPE2G-40	Corrosion protection	
NLGI consistency class	2	Emcor: – standard ISO 11007	0–0
Thickener	Anhydrous calcium	– water washout test	0–1
Colour	Yellow	– salt water test (100% seawater)	<2–2
Base oil type	Ester	Copper corrosion	
Operating temperature range	–40 to +100 °C (–40 to +212 °F)	DIN 51 811, 100 °C	2 max.
Dropping point DIN ISO 2176	>140 °C (>84 °F)	Water resistance	
Base oil viscosity		DIN 51 807/1, 3 hrs at 90 °C	1 max.
40 °C, mm ² /s	500	Water wash-out test, ISO 11009	<5%
100 °C, mm ² /s	50	Flow pressure	
Oil separation		DIN 51805-2	<1 400 @ -40 °C
IP 121	1–3	EP performance	
Penetration DIN ISO 2137		Wear scar DIN 51350/5, 1 400 N, mm	2 max.
60 strokes, 10 ⁻¹ mm	265–295	4-ball test, welding load DIN 51350/4, N	3 200 min.
100 000 strokes, 10 ⁻¹ mm	+35 max. (325 max.)	Biodegradability	
		Ecolabel certification	SE/027/008
		Biodegradability OECD 301B	>60%

Lubrication management

Just as asset management takes maintenance to a higher level, a lubrication management approach allows lubrication to be seen from a wider point of view. This approach helps to effectively increase machine reliability at a lower overall cost.



skf.com | skf.com/mapro | skf.com/lubrication

© SKF is a registered trademark of the SKF Group.

© SKF Group 2020

The contents of this publication are the copyright of the publisher and may not be reproduced (even extracts) unless prior written permission is granted. Every care has been taken to ensure the accuracy of the information contained in this publication but no liability can be accepted for any loss or damage whether direct, indirect or consequential arising out of the use of the information contained herein.

PUB MP/P8 18909 EN · June 2020

Certain image(s) used under license from Shutterstock.com.