

Execution:

drop forged, without cracks and wrinkles, acc. DIN EN 10243-1, ready processed

Thread:

according to DIN ISO 13-1, tolerance 6g, also possible in UN or UNC

Allowable stresses:

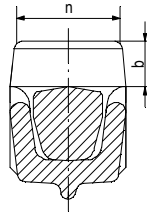
see page 119 and 120

Certification:

according AD-2000: A5, Anl. 2, W2, W7, W10

Certificate:

according to DIN EN 10204-3.1, DIN EN 10204-3.2 and ASME-Code possible



Material*	Equipment
1.4571	with plain washer
1.7225 (M12 - M30)	spherical-** or plain washer
Gr. B8M, class 1	with plain washer
Gr. B7	spherical-** or plain washer

Type	Clamping length	Length	Width	Dimensions											Wight		
				D	M	L	B	d2	b	c	d	e	f	g		h	i
M10-K	26 - 31	83	25	8	9,5	3	6	11	11	15	27	5	6	20	0,2		
M10-L	25 - 40	92														14	0,2
M10-LS	73 - 90	142															
M12-L	32 - 60	133	34	10	12	4	8	15	17	16	38	6	8	30	0,5		
M12-L2	59 - 87	160													0,6		
M16-K	48 - 68	165	40	14	18	5	12	20	20	25	58	8	8	32	1,1		
M16-L	62 - 95	190													1,2		
M16-L2	86 - 116	215													1,3		
M16-LS	104 - 134	235													1,4		
M20-K	60 - 85	195	48	16	19	5	14	25	25	30	73	8	8	42	2,0		
M20-L	76 - 101	210													2,0		
M20-L2	100 - 138	250													2,2		
M24-K	74 - 102	230	52	20	23	5	14	30	30	30	78	9	10	46	2,7		
M24-L	95 - 138	265													3,0		
M24-L2	122 - 172	295													3,2		
M24-LS	158 - 208	330													3,4		
M24-LT***	202 - 252	375													3,7		
M24-LU***	247 - 297	420													4,3		
M24-LX	292 - 342	465													4,8		
M27-K	97 - 122	291	63	24	27	6	14	48	40	40	85	9	10	55	4,8		
M27-L	127 - 157	327													5,0		
M27-L2	162 - 207	375													5,5		
M27-L3	222 - 267	435													6,2		
M27-L4***	272 - 312	480													6,7		
M27-L5***	327 - 367	535													7,4		
M27-LS	352 - 397	566													7,7		
M27-LT***	402 - 442	610													8,6		
M27-LX	452 - 492	660													9,5		

M30 on demand

*other materials available on request | **Spherical washer starting at M16 | *** special production