

## Accessories Catalog

Value focused by exceeding expectations for quality, reliability and support.



# Demand Genuine Cat Pumps® Accessories

## Ensuring Maximum Pumping System Performance

A pumping system's ongoing performance is as good as its weakest component, which is why Cat Pumps offers a wide range of quality accessories. Adhering to the same exacting standards as our pumps, all accessories are performance-tested and designed to match each pump's unique specifications. By demanding genuine Cat Pumps products, you receive the best value and lowest cost of ownership over the life of the system.

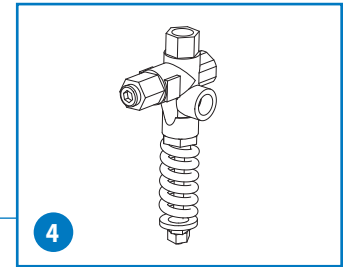
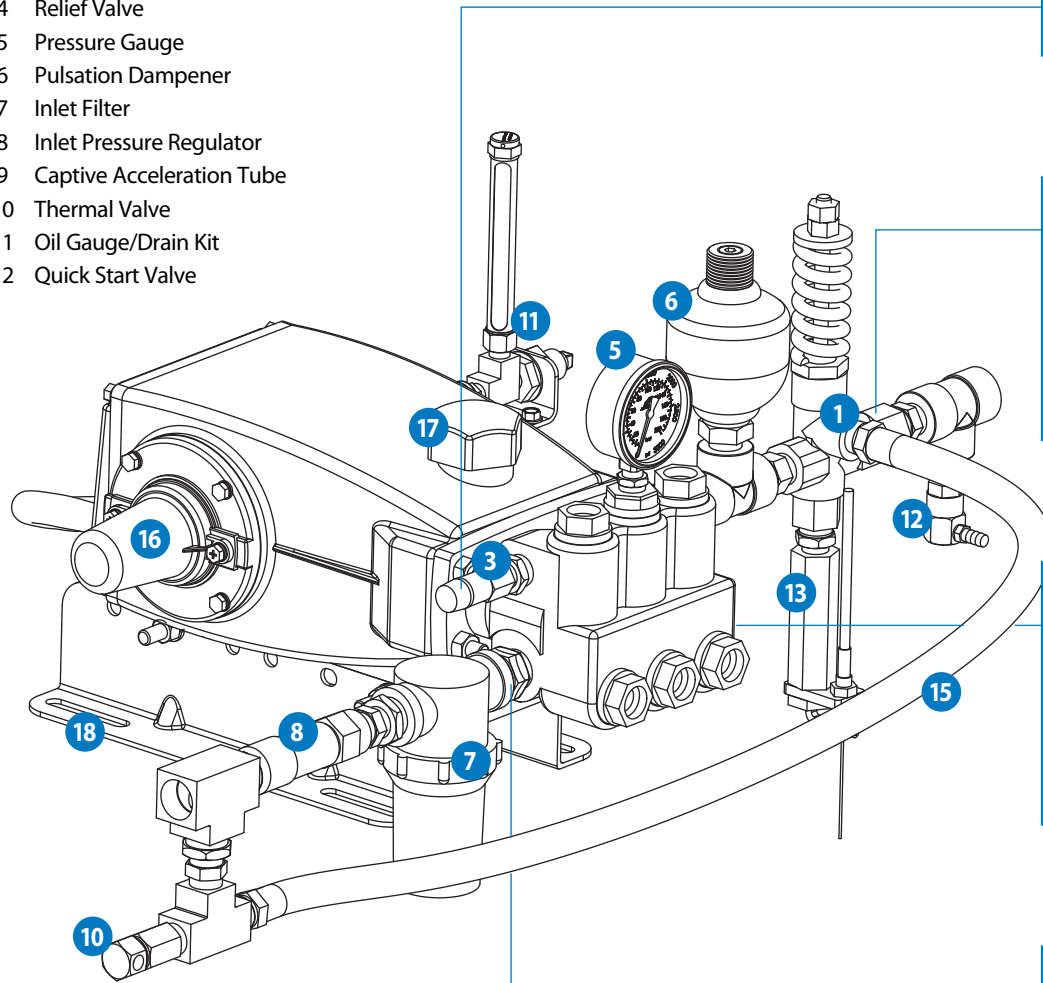
To ensure the very best system life-cycle, Cat Pumps recommends a primary regulating device, secondary pressure relief device, and discharge pressure gauge. In addition to these system standards, this catalog includes hundreds of other accessories ensuring that whatever the need, Cat Pumps has a selection of proven accessories to compliment your pump investment.

## Table of Contents

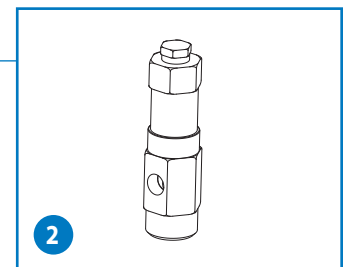
<b>Typical Installation</b>	<b>3</b>	<b>Lubrication Accessories</b>	<b>20</b>
<b>Discharge Accessories</b>	<b>4</b>	Crankcase Oil	20
Pressure Regulators	4	Oil Drain/Level Indicator Kits	21
Unloaders	5	Gear Lube	21
Relief Valves	6	Anti-seize and Sealants	21
Pop-Off Valves	7	<b>Pump Accessories</b>	<b>22</b>
Pressure Gauges	8	Protectors – Shaft and Oil Cap	22
Valve Plug Adapters	8	Keys	23
Pulsation Dampeners	9	Rails	24
<b>Inlet Accessories</b>	<b>10</b>	<b>Drive Accessories</b>	<b>25</b>
Filters	10	Bell Housing and Flexible Couplings	25
Inlet Pressure Gauges	10	Motorized Flange Mount	26
Inlet Pressure Regulators	11	Gearboxes	27
Captive Acceleration Tubes	11	Hubs and Hub/Key Assemblies	28
Thermal Valves	12	Clutches	29
<b>Specialty Accessories</b>	<b>12</b>	Pulleys	29
Quick Start Valves	12	<b>Service Tools</b>	<b>30</b>
Throttle Control	13	Wrenches	30
MAG-JET and Pulsator Assemblies	13	Pliers	30
Flow Switches	13	Oil Gauge Removal Tool	30
Auto-Shutoff Assemblies	14	Seal Case Removal Tools	31
LPS Monitors	14	Piston Pump Tools	31
Float Valves	14		
Pressure Switches	15		
<b>Operator Controls</b>	<b>16</b>		
Guns	16		
Lances	17		
Nozzles	18		
Foamers	19		
Chemical Injectors	19		
Pulse Pumps	20		

# Typical Installation

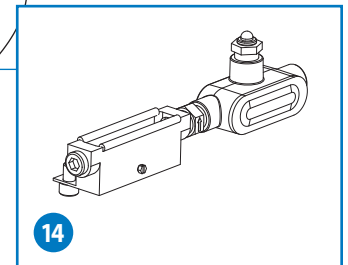
- 1 Unloader
- 2 Regulator
- 3 Pop-Off Valve
- 4 Relief Valve
- 5 Pressure Gauge
- 6 Pulsation Dampener
- 7 Inlet Filter
- 8 Inlet Pressure Regulator
- 9 Captive Acceleration Tube
- 10 Thermal Valve
- 11 Oil Gauge/Drain Kit
- 12 Quick Start Valve



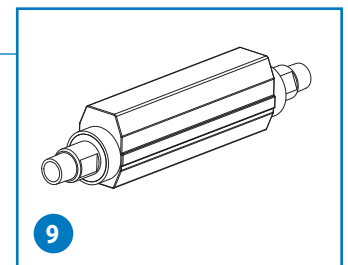
**Relief Valve**



**Regulator**



**LPS Monitor**



**Captive Acceleration Tube**

- 13 Throttle Controller
- 14 LPS Monitor
- 15 Bypass Hose
- 16 Shaft Protector
- 17 Oil Cap Protector
- 18 Rails

NOTE: These illustrations show the basic elements for a typical installation of a high pressure piston or plunger pump. **Not all components shown are required for all applications or systems.** Each component presents potential problems that too often are ascribed to a perfectly functioning pump, such as: a clogged strainer, a partially closed shut-off valve, a faulty gauge, or a malfunctioning regulator/unloader. Proper system installation, routine lubrication, monitoring and maintenance of components are your basic guarantees of optimum pump performance. Cat Pumps does not assume any liability or responsibility for the design or operation of a customer's high pressure system.

\*Preferred mounting of the Pulsation Dampener is directly on the discharge manifold of the pump, however, following a pressure unloader is required when the by-pass is returned to the inlet of the pump and an Inlet Pressure Regulator or Check Valve is used.

# Discharge Accessories



## Pressure Regulators

Used when consistent pressure accuracy is required.

- Typically used for multiple pump, nozzle and gun applications.
- Conical design lowers minimum required by-pass flow and eliminates cavitation effects extending performance life.

Model	FLOW RANGE	PRESSURE RANGE	PORTS	
	gpm/lpm	psi/bar	Inlet/Discharge	By-Pass
STEEL/NICKEL PLATED (All models are Flow-Thru design with conical piston and seat)				
7001	0.5-5/1.9-19	100-1000/7-70	3/8" NPTF	1/2" NPTF
7002	0.5-5/1.9-19	500-2000/35-140	3/8" NPTF	1/2" NPTF
7003	0.5-5/1.9-19	1500-3000/105-210	3/8" NPTF	1/2" NPTF
7011	1.0-10/3.8-38	100-1000/7-70	1/2" NPTF	3/4" NPTF
7012	1.0-10/3.8-38	500-2000/35-140	1/2" NPTF	3/4" NPTF
7013	1.0-10/3.8-38	1500-3000/105-210	1/2" NPTF	3/4" NPTF
7014	1.0-10/3.8-38	2000-4000/140-275	1/2" NPTF	3/4" NPTF
7021	2.5-25/9.5-95	100-1000/7-70	3/4" NPTF	1" NPTF
7022	2.5-25/9.5-95	500-2000/35-140	3/4" NPTF	1" NPTF
7023	2.5-25/9.5-95	1500-3000/105-210	3/4" NPTF	1" NPTF
7024	2.5-25/9.5-95	2000-4000/140-275	3/4" NPTF	1" NPTF
7031	3.5-35/13.2-132	250-1000/18-70	3/4" NPTF	1" NPTF
7032	3.5-35/13.2-132	1000-2000/70-140	3/4" NPTF	1" NPTF
7033	3.5-35/13.2-132	1500-3000/105-210	3/4" NPTF	1" NPTF

### STAINLESS STEEL (All models are Flow-Thru design with conical piston and seat)

7001.100*	0.5-5/1.9-19	100-1000/7-70	3/8" NPTF	1/2" NPTF
7002.100*	0.5-5/1.9-19	500-2000/35-140	3/8" NPTF	1/2" NPTF
7003.100*	0.5-5/1.9-19	1500-3000/105-210	3/8" NPTF	1/2" NPTF
7011.100*	1.0-10/3.8-38	100-1000/7-70	1/2" NPTF	3/4" NPTF
7012.100*	1.0-10/3.8-38	500-2000/35-140	1/2" NPTF	3/4" NPTF
7013.100*	1.0-10/3.8-38	1500-3000/105-210	1/2" NPTF	3/4" NPTF
7014.100*	1.0-10/3.8-38	2000-4000/140-275	1/2" NPTF	3/4" NPTF
7021.100*	2.5-25/9.5-95	100-1000/7-70	3/4" NPTF	1" NPTF
7022.100*	2.5-25/9.5-95	500-2000/35-140	3/4" NPTF	1" NPTF
7023.100*	2.5-25/9.5-95	1500-3000/105-210	3/4" NPTF	1" NPTF
7024.100*	2.5-25/9.5-95	2000-4000/140-275	3/4" NPTF	1" NPTF
7031.100*	3.5-35/13.2-132	250-1000/18-70	3/4" NPTF	1" NPTF
7032.100*	3.5-35/13.2-132	1000-2000/70-140	3/4" NPTF	1" NPTF
7033.100*	3.5-35/13.2-132	1500-3000/105-210	3/4" NPTF	1" NPTF
7375	10.0-75/38-284	100-1000/7-70	1-1/4" NPTF	1-1/2" NPTF
7376	10.0-75/38-284	500-2000/35-140	1-1/4" NPTF	1-1/2" NPTF
7720	0.5-10/1.9-38	2000-10,000/138-689	1/4" NPTF	3/8" NPTF

\* Stainless Steel lower body and wetted internal components.

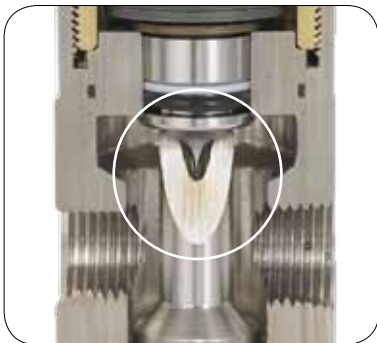
### STAINLESS STEEL (Tee mount with conical piston and seat)

7350	1.0-12/3.8-45	400-1500/28-105	1/4" NPTF/----	3/8" NPTF
------	---------------	-----------------	----------------	-----------

### BRASS (All models are Tee mounts)

7080	2.5-7.8/9.5-29.5	150-1450/10-100	3/8"NPTF	3/8" NPTF
7082	2.5-7.8/9.5-29.5	850-3575/59-246	3/8"NPTF	3/8" NPTF
7085	1.0-3.5/3.8-13.2	205-2300/14-158	1/4"BSPM	1/8" BSPM

## TECH TIP



7001-7033 Series Regulators exclusively from Cat Pumps feature conical design delivering unmatched performance and life.

### Features:

- Conical design lowers minimum by-pass flow from 10% - 5% optimizing system performance
- Virtually eliminates cavitation effects across piston and seat significantly extending life
- Compact in-line plumbing
- Low pressure override provides smooth and stable operation without chatter.

# Unloaders

Typically used with trigger gun applications.

- Reduces load on pump and motor when in by-pass.
- Wide pressure and flow range models available.



Model	FLOW RANGE gpm/lpm	PRESSURE RANGE psi/bar	PORTS	
			Inlet/Discharge	By-Pass

## BRASS MODELS (Flow Sensitive)

7450	2.4-10/9.0-40	100-4000/7-275	3/8" NPTF	3/8" NPTF
------	---------------	----------------	-----------	-----------

## BRASS MODELS (Pressure Sensitive)

7500S	0.5-6/1.89-23	100-2000/7-140	3/8" NPTM	3/8" NPTF
7600S	2.0-5/7.6-19	700-3500/49-245	3/8" NPTM	3/8" NPTF
7535	1.0-21/3.8-80	800-4000/55-275	1/2" NPTF	1/2" NPTF
7537	1.0-21/3.8-80	230-2600/16-179	1/2" NPTF	1/2" NPTF
7576	1.0-21/3.8-80	1500-7250/105-500	1/2" BSPF	1/2" BSPF
7580	0.5-6.5/1.9-25	400-1000/28-70	3/8" NPTM	3/8" NPTF
7581	0.5-6.5/1.9-25	800-2300/55-158	3/8" NPTM	3/8" NPTF
7590	10.0-52/38-200	400-2175/28-150	1" NPTF	1" NPTF
7592	10.0-52/38-200	450-2500/31-175	1" NPTF	1" NPTF
7620	0.5-7.8/1.9-29.5	100-3145/7-220	3/8" BSPM/BSPF	3/8" BSPF
7630	2.0-10.5/7.6-40	400-5100/28-350	3/8" NPTM/BSPF	1/2" NPTF
7670	2.5-8/9.5-30	150-1750/10-120	3/8" NPTF	3/8" NPTF
7672	2.5-8/9.5-30	850-3200/60-220	3/8" NPTF	3/8" NPTF
7690	2.5-8/9.5-30	1000-4050/70-280	3/8" NPTF	3/8" NPTF
7691	2.5-8/9.5-30	1000-4050/70-280	3/8" NPTF	3/8" NPTF
7730	0.5-4.5/1.9-17	100-3000/7-210	1/2" NPTF/NPTM	Built-in By-Pass
7850	0.5-6/1.9-23	100-4000/7-275	1/2" NPTF/NPTM	Built-in By-Pass

## STAINLESS STEEL MODELS (Pressure Sensitive)

7501	0.5-6.0/1.9-23	100-2000/7-140	3/8" NPTM	3/8" NPTF
7531	1.0-21/3.8-80	400-2200/28-155	1/2" NPTF	1/2" NPTF
7533	1.0-21/3.8-80	800-4000/55-275	1/2" NPTF	1/2" NPTF
7536	1.0-21/3.8-80	3000-5700/210-400	1/2" NPTF	1/2" NPTF

## TECH TIP

### Regulator vs. Unloader

One common inquiry among system designers is the difference between a pressure regulator and a regulating pressure unloader. A pressure regulators main function is to set and maintain consistent system pressure while also acting as a primary pressure relief device. Since a positive displacement pump is always delivering flow, regardless of where it is directed downstream, a pressure regulating unloader is required in applications that water flow is stopped (i.e. trigger gun applications). A pressure regulating unloader performs the same function as a regulator but also contains an unloading device which redirects flow through a by-pass line when flow is restricted. This flow can either be routed back to the source or to the inlet of the pump. Without this re-direction, system pressure would continue to build causing system failure. If the by-pass is being redirected to the inlet, a thermal valve is recommended as a safeguard against heat rise.

# Discharge Accessories



## Relief Valves

Reliable and accurate secondary backup pressure relief.

- Opens auxiliary passage to allow flow out of system when exceeding preset system pressure.
- Heavy duty, conveniently mounts directly into discharge line.
- Wide pressure and flow range models available.

Model	FLOW RANGE gpm/lpm	PRESSURE RANGE psi/bar	PORTS	
			Inlet/Discharge	By-Pass
BRASS MODELS				
7190	0-6.5/0-25	400-5000/28-345	3/8" BSPF	3/8" BSPF
7196	0-21/0-80	100-7250/7-500	1/2" BSPF/----	3/8" BSPF
7500S.100	0.5-6/1.89-23	100-2000/7-140	3/8" NPTM	3/8" NPTF
7535.100	1.0-21/3.8-80	800-4000/55-275	1/2" NPTF	1/2" NPTF
7537.100	1.0-21/3.8-80	230-2600/16-179	1/2" NPTF	1/2" NPTF
7590.100	10.0-52/38-200	400-2175/28-150	1" NPTF	1" NPTF
7595	1.0-53/3.8-200	260-2600/18-180	3/4" NPTF/----	1/2" NPTF
7620.100	0.5-7.8/1.9-29.5	100-3145/7-220	3/8" BSPM/BSPF	3/8" BSPF
7630.100	2.0-10.5/7.6-40	400-5100/28-350	3/8" NPTM/BSPF	1/2" NPTF
7670.100	2.5-8/9.5-30	150-1750/10-120	3/8" NPTF	3/8" NPTF
7672.100	2.5-8/9.5-30	850-3200/60-220	3/8" NPTF	3/8" NPTF
7690.100	2.5-8/9.5-30	1000-4050/70-280	3/8" NPTF	3/8" NPTF
STAINLESS STEEL MODELS				
7034	1.0-21/3.8-80	400-2200/28-155	1/2" NPTF	1/2" NPTF
7036	1.0-21/3.8-80	800-4000/55-275	1/2" NPTF	1/2" NPTF
7037	1.0-21/3.8-80	3000-5700/210-400	1/2" NPTF	1/2" NPTF
7501.100	0.5-6.0/1.9-23	100-2000/7-140	3/8" NPTM	3/8" NPTF
7531.100	1.0-21/3.8-80	400-2200/28-155	1/2" NPTF	1/2" NPTF
7533.100	1.0-21/3.8-80	800-4000/55-275	1/2" NPTF	1/2" NPTF
7536.100	1.0-21/3.8-80	3000-5700/210-400	1/2" NPTF	1/2" NPTF
890700	30-180/114-680	1000-3000/70-210	2" NPTF	2" NPTM
890702	25-210/95-795	500-2000/35-140	2" NPTF	2" NPTM
890704	45-320/170-1211	500-2000/35-140	2" NPTF	2" NPTM
890706	15-260/57-984	250-1000/17-210	2" NPTF	2" NPTM
890708	0-13.0/0-49	2500-10000/175-690	2" NPTM	2" NPTF
890709	20-60/76-227	1500-4000/105-275	2" NPTF	2" NPTM
890718	10-50/38-189	1000-8000/70-550	2" NPTM	2" NPTF



## Need more information?

Find Product Data Sheets online at [catpumps.com](http://catpumps.com)

# Pop-Off Valves

Economical, secondary pressure relief protection.

- Pops open when system exceeds preset pressure.
- Lightweight, compact design quickly and conveniently mounts directly into discharge line.
- Competitive ultra compact models for portable systems.

Model	FLOW RANGE gpm/lpm	PRESSURE RANGE psi/bar	PORTS	
			Inlet/Discharge	By-Pass
BRASS MODELS				
30960	1.0-6.0/3.8-23	300-1500/20-105	1/4" NPTM/----	3/4" Barb
30961	1.0-6.0/3.8-23	1000-3000/70-210	1/4" NPTM/----	3/4" Barb
33960	1.0-6.0/3.8-23	300-1500/20-105	3/8" NPTM/----	3/4" Barb
33960S	1.0-6.0/3.8-23	300-1500/20-105	3/8" NPTM/----	3/4" Barb
33961	1.0-6.0/3.8-23	1000-4000/70-275	1/4" NPTM/----	3/4" Barb
33961S	1.0-6.0/3.8-23	1000-4000/70-275	1/4" NPTM/----	3/4" Barb
33962	1.0-6.0/3.8-23	1000-4000/70-275	3/8" NPTM/----	3/4" Barb
33962S	1.0-6.0/3.8-23	1000-4000/70-275	3/8" NPTM/----	3/4" Barb

<b>STAINLESS STEEL MODELS</b>				
9920*	0-20/0-76	0-10000/0-690	3/8" NPTM/NPTF	3/8" NPTF
9960	1.0-6.0/3.8-23	300-1500/20-105	1/4" NPTM/----	3/4" Barb
9961	1.0-6.0/3.8-23	1000-3000/70-210	1/4" NPTM/----	3/4" Barb
9962	1.0-6.0/3.8-23	1000-4000/70-275	1/4" NPTM/----	3/4" Barb
890703	0-135/0-511	400-1500/28-105	2" NPTM	2" NPTF
890710	0-100/0-378	300-1500/20-105	1" NPTM	1" NPTF
890711	0-50/0-189	1000-6000/70-414	1" NPTM	1" NPTF
890713	0-210/0-795	500-4000/35-275	2" NPTM	2" NPTF
890715	0-100/0-378	1000-8000/70-550	2" NPTM	2" NPTF
890721	0-100/0-378	100-600/7.0-41	2" NPTM	2" NPTF

\* Rupture Disc Assembly (Used on models 1810, 1810K)



## TECH TIP

### Primary and Secondary Relief

Cat Pumps always recommends each high pressure pumping system is equipped with a primary and secondary safety relief device as a safeguard to over pressurization. Either a pressure regulator or pressure regulating unloader can be used as a primary relief device but you should always include a pressure relief or pop-off valve when designing a system. This is an economical alternative to protect system from failure which can not only cause damage to expensive system components but lead to costly downtime.



# Discharge Accessories



## Pressure Gauges

Accurately monitors pump outlet pressure.

- Glycerine filled for consistent and accurate pressure readings.
- Sealed stainless steel case eliminates corrosion risk.

MODEL	PRESSURE RANGE		MAXIMUM TEMPERATURE (F)	PORTS Inlet
	psi	bar		
BRASS MODELS (Brass Fitting and Bourdon Tube, 304 SS Case)				
6086	0-1500	0-105	212	1/4" NPTM
6088	0-3000	0-210	212	1/4" NPTM
6089	0-6000	0-415	212	1/4" NPTM
STAINLESS STEEL MODELS (316 SS Fitting and Bourdon Tube, 304 SS Case)				
6071	0-1500	0-105	400	1/4" NPTM
6085	0-1500	0-105	212	1/4" NPTM
6073	0-3000	0-210	400	1/4" NPTM
6097	0-3000	0-210	212	1/4" NPTM
6076	0-6000	0-415	400	1/4" NPTM
6087	0-6000	0-415	212	1/4" NPTM
6081*	0-20000	0-1379	212	1/2" NPTM

\* 316 SS Fitting and Bourdon Tube, black fiberglass reinforced case



## Valve Plug Adapters

Used to directly mount pressure gauge to valve port

- Eliminates need for additional plumbing on discharge port

MODEL	MODELS USED	PORT	MATERIAL
35759	2DX	1/4" NPT	BB
35761	2DX, 3DX	1/4" NPT	BB
49766	3GXT	13 mm	BB
34559	5DX	3/8" NPT	BB
35758	66DX	3/8" NPT	BB
998954	3CP	3/8" NPT	BB
34549	5CP, Model 45	3/8" NPT	BB
45939T	56-60	3/8" NPT	BB
34447	7CP, 7, 15 Frame, 5CP6120	3/8" NPT	BB
43848	1530	1/2" NPT	FBB
76795	3507	1/4" NPT	NAB
34798	3535, 3537	3/4" NPT	NAB
997878	3560	1/4" NPT	BB



# Pulsation Dampeners

Used when a smooth output flow and pressure is required.

- Pressurized bladder absorbs impact from pressure spikes providing smooth flow.
- Most models are field repairable and rechargeable.

Model	FLOW RANGE gpm/lpm	PRESSURE RANGE psi/bar	VOLUME Cubic Inches	PRECHARGE psi	PORTS Inlet
<b>CARBON STEEL</b> Rechargeable					
6010	40/151	100-3000/7-210	45	450	1" NPTM
6011	25/95	100-7200/7-500	15	2000	1/2" NPTF
6012	70/265	100-1500/7-105	120	450	1 1/4" NPTM

<b>CARBON STEEL</b> Sealed					
6026*	15/57	300-600/20-41	10	Sealed - 250	1/2" NPTM
6028*	15/57	600-1000/41-70	10	Sealed - 450	1/2" NPTM

<b>316 STAINLESS STEEL</b> Rechargeable					
6013	40/151	100-2000/7-140	45	450	1" NPTM
6014	25/95	100-2400/7-170	20	450	3/4" NPTM
6015	70/265	100-1500/7-105	120	450	1 1/4" NPTM
6029*	15/57	100-3000/7-210	10	450	1/2" NPTM
6030*	15/57	100-3000/7-210	10	450	1/2" NPTM
6031	15/57	100-2400/7-168	10	450	1/2" NPTM

<b>316 STAINLESS STEEL</b> Rechargeable/Rebuildable					
701501	15/57	100-4300/7-296	6	No precharge	1/2" NPTF
701502	25/95	100-3800/7-265	15	No precharge	1/2" NPTF
701503	75/284	100-3000/7-210	30	No precharge	1" NPTF
701507	25/95	100-7100/7-490	15	No precharge	1/2" NPTF
701520	15/57	100-8300/7-570	6	No precharge	1/2" NPTF
701521	15/57	100-4300/7-296	6	No precharge	1/2" NPTF
701522	25/95	100-3800/7-265	15	No precharge	1/2" NPTF
701523	75/284	100-3000/7-210	30	No precharge	1" NPTF
701527	25/95	100-7100/7-490	15	No precharge	1/2" NPTF
701535	15/57	100-8500/7-586	6	No precharge	1/2" NPTF
701537	25/95	100-7100/7-490	15	No precharge	1/2" NPTF
701541	15/57	100-4300/7-296	6	No precharge	1/2" NPTF
701542	25/95	100-3800/7-265	15	No precharge	1/2" NPTF
701543	75/284	100-3000/7-210	30	No precharge	1" NPTF
701550	100/378	100-3365/7-232	122	No precharge	1 1/2" NPTF
701555	100/378	100-6350/7-438	60	No precharge	1" NPTF
701557	320/1211	100-1275/7-88.0	214	No precharge	1 1/2" NPTF
701607	320/1211	100-1275/7-88.0	214	No precharge	1 1/2" NPTF
701610	25/95	100-10000/7-690	15	No precharge	1/2" NPTF

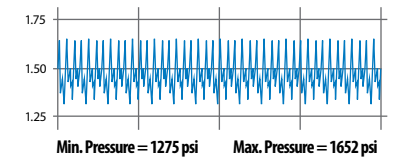
\* Stainless steel lower body for wetted parts.



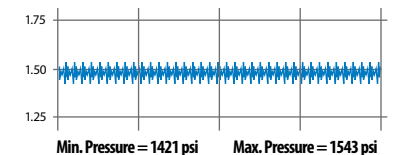
## TECH TIP

Due to the design of the positive displacement pumps, small pressure spikes are caused during each rotation. In critical or heavy operation, these spikes can cause accelerated wear or damage to the pump or downstream components. The installation of a pulsation dampener is your best safeguard against premature wear.

### Model 1530 w/o pulsation dampener



### Model 1530 w/ pulsation dampener



### Pulsation Dampener Benefits:

- Reduces water hammer
- Protects downstream components (i.e., regulator, unloader, relief valve)
- Improved performance at low rpm
- Produces smooth, consistent flow

# Inlet Accessories



## Filters

Used to filter standard water particles and debris.

- Flow from inside to outside allowing sediment to collect inside the removable filter screen.
- Removable bowl permits easy cleaning without removing filter or plumbing.

Model	SUCTION/ PRESSURIZED FLOW		MESH		PORTS	
	gpm	lpm	Micron	Material	Inlet	Discharge

### WHITE NYLON BODY

7104	6/10	23/38	80	S	1/2"NPTF	1/2"NPTF
7105	15/20	57/76	80	S	3/4"NPTF	3/4"NPTF
7106	20/25	76/95	80	S	1"NPTF	1"NPTF
7107	35/50	133/189	80	S	1-1/4"NPTF	1-1/4"NPTF
7108	60/75	227/284	80	S	1-1/2"NPTF	1-1/2"NPTF

### CLEAR NYLON BODY

7104.4	6/10	23/38	80	S	1/2"NPTF	1/2"NPTF
7105.5	15/20	57/76	80	S	3/4"NPTF	3/4"NPTF
7106.6	20/25	76/95	80	S	1"NPTF	1"NPTF
7107.7	35/50	133/189	80	S	1-1/4"NPTF	1-1/4"NPTF
7108.8	60/75	227/284	80	S	1-1/2"NPTF	1-1/2"NPTF

### POLYPROPYLENE BODY (Y-INLINE)

7109	100/150	378/567	80	SS	2"NPTF	2"NPTF
------	---------	---------	----	----	--------	--------

### WHITE NYLON BODY (MICRO)

7203	10 gpm max	38	80	S	1/2"NPTM	1/2"NPTM
7204	10 gpm max	38	80	S	1/2"NPTF	1/2"NPTF

### CLEAR NYLON BODY (MICRO)

7203.3	10 gpm max	38	80	S	1/2"NPTM	1/2"NPTM
7204.4	10 gpm max	38	80	S	1/2"NPTF	1/2"NPTF

### REINFORCED COMPOSITE BODY W/BRASS THREADED PORTS, 1/4" BSPF AUXILIARY PORT

32738	8 gpm max	30	50	SS	1/2"BSPF	1/2"BSPM
32748	8 gpm max	30	50	SS	1/2"BSPF	1/2"BSPF

S = 304 Stainless steel, SS = 316 Stainless steel Optional Mesh sizes available



## Inlet Pressure Gauges

Accurately monitors pump inlet pressure

- Glycerine filled for consistent and accurate pressure readings.
- Sealed stainless steel case eliminates corrosion risk.

Model	PRESSURE RANGE		PORTS Inlet
	psi	bar	

### BRASS MODELS (BRASS FITTING AND BOURDON TUBE, 304 SS CASE)

6082	100	7	1/4" NPTM Bottom
997901	400	28	1/4" NPTM Bottom

### STAINLESS STEEL MODELS (316 SS FITTING AND BOURDON TUBE, 304 SS CASE)

997068	160	11	1/4" NPTM Bottom
997336	160	11	1/4" NPTM Panel Mount

Note: Maximum inlet pressure is 70 psi on most pumps. Review pump data sheet

# Inlet Pressure Regulators

Used to set and maintain consistent pressure at pump inlet.

- Convenient, compact inline installation.
- Adjustable and non-adjustable models available.
- Handles inlet pressure up to 75 psi.

Model	MAXIMUM FLOW gpm/lpm	INLET PRESSURE RANGE psi	OUTLET REGULATED PRESSURE RANGE	PORTS	
			psi	Inlet/Discharge	With Adapter

## BRASS - NONADJUSTABLE

7069	10.0/38	40-200	30-45	3/4"FGH/3/4"MGH	NA
7071	10.0/38	40-200	30-45	3/4"FGH/3/4"MGH	1/2"NPTF

FGH = Female Garden Hose, MGH = Male Garden Hose

Model	FLOW RANGE gpm/lpm	INLET PRESSURE RANGE psi	OUTLET REGULATED PRESSURE RANGE	PORTS
			psi	Inlet/Discharge

## NICKEL ALUMINUM BRONZE - ADJUSTABLE

7075	15-70/57-265	40-300	20-100	1-1/4"NPTF/1-1/4"NPTF
------	--------------	--------	--------	-----------------------



# Captive Acceleration Tubes

Used to maintain consistent inlet pressure when there is high temperatures, booster pump feed and long inlet lines.

- Eliminates cavitation and potentially damaging surges and hydraulic spikes.
- Compact, easy installation with matching adapter assemblies.
- Does not protect against starvation.

Model	MAXIMUM FLOW		INLET PRESSURE RANGE		PORTS
	gpm	lpm	psi	bar	Adapter sizes available

## STAINLESS STEEL

711500	15	57	2.0-50	0.1-3.5	1/2", 3/4", 1", 1-1/4", 1-1/2"
714500	45	170	2.0-50	0.1-3.5	1", 1-1/4", 1-1/2", 2", 2-1/2"
717500	75	284	2.0-50	0.1-3.5	2", 2-1/2", 3"
719500	320	1211	2.0-60	0.1-4.1	6" X ANSI 150, 6" elbow

Fitting Size	CAPTIVE ACCELERATION TUBES		
	711500	714500	717500

## STRAIGHT ADAPTER FITTINGS

1/2"NPTM	711502		
3/4"NPTM	711503		
1"NPTM	711504	714504	
1 1/4"NPTM	711505	714505	
1 1/2"NPTM	711506	714506	
2"NPTM		714508	717508
2 1/2"NPTM			717510

## ELBOW ADAPTER FITTINGS

1 1/2"	701818		
2 1/2"		701828	
3"			701833



# Inlet Accessories



## Thermal Valves

Eliminates heat build-up in a closed loop by-pass system.

- Ultra lightweight with three port sizes options for easy installation.

Model	MAXIMUM FLOW		MAXIMUM PRESSURE		TEMPERATURE MAX (°F)	PORTS	
	gpm	lpm	psi	bar		Inlet	Bleed

### BRASS MODELS

7140	25	95	125	8.6	145	1/4"NPTM	1/8"NPTF
7141	25	95	125	8.6	145	3/8"NPTM	1/8"NPTF
7142	25	95	125	8.6	145	1/2"NPTM	1/8"NPTF
7143	25	95	125	8.6	165	1/4"NPTM	1/8"NPTF
7144	25	95	125	8.6	165	3/8"NPTM	1/8"NPTF
7145	25	95	125	8.6	165	1/2"NPTM	1/8"NPTF
7146	25	95	125	8.6	130	1/4"NPTM	1/8"NPTF
7170	25	95	125	8.6	180	1/4"NPTM	1/8"NPTF
7171	25	95	125	8.6	180	3/8"NPTM	1/8"NPTF
7172	25	95	125	8.6	180	1/2"NPTM	1/8"NPTF
7175	25	95	125	8.6	190	1/4"NPTM	1/8"NPTF
7176	25	95	125	8.6	190	3/8"NPTM	1/8"NPTF
7177	25	95	125	8.6	190	1/2"NPTM	1/8"NPTF

### BRASS -MICRO MODELS

7115	25	95	145	10.0	145	1/4"BSPM	7mm
7116	25	95	145	10.0	145	3/8"BSPM	7mm
7117	25	95	145	10.0	145	1/2"BSPM	7mm

### REINFORCED COMPOSITE MODELS

7128	25	95	125	8.6	165	1/4"NPTM	1/8"NPTF
7129	25	95	125	8.6	165	3/8"NPTM	1/8"NPTF
7130	25	95	125	8.6	165	1/2"NPTM	1/8"NPTF
7135	25	95	125	8.6	145	1/4"NPTM	1/8"NPTF
7136	25	95	125	8.6	145	3/8"NPTM	1/8"NPTF
7137	25	95	125	8.6	145	1/2"NPTM	1/8"NPTF
7138	25	95	125	8.6	130	1/4"NPTM	1/8"NPTF

# Specialty Accessories



## Quick Start Valve

Designed to relieve pump discharge line pressure during system start-up.

- Use with a pressure lock up style unloader (install after unloader).
- Requires less engine or motor start-up power.

MODEL	MAXIMUM FLOW gpm/lpm	MAXIMUM PRESSURE psi/bar	PSI/BAR	INLET PORT	BARB
7126	8.0/30	4050/280	105/7.25	3/8" NPTM	1/4"

## Throttle Control

Reduces engine wear and fuel consumption by lowering RPM when pump is in by-pass.

- Can be used on any size gas engine.
- Should not be used with a pressure regulator.

MODEL	MAXIMUM PRESSURE psi/bar	ACTUATION PRESSURE psi/bar	INLET PORT
8100	4000/275	250/18	3/8" NPTM



## MAG-JET and Pulsator Assemblies

Converts your water pressure pump to a water jetting pump.

- Eliminates traditional dry pumping chamber that causes damage to pump.
- Easily mounts in the manifold inlet plug on most Cat Pumps models.

MODEL	USED ON PUMP MODELS
<b>MAG-JET ASSEMBLIES</b>	
31804	3CP1120, 3CP1120G, 3CP1130, 3CP1140
31805	66DX30G1I, 66DX35G1I, 66DX40G1I
31810	56, 56G1, 57, 59, 59G1, 60, 60G1
31814	310, 340, 350, 5CP2120W, 5CP2140WCS, 5CP2150W
31815	45, 45G1, 5CP3120, 5CP3120CSS, 5CP3120CSSG1, 5CP5120
31845	51G1, 660, 1050, 5CP6120, 7CP6170
<b>PULSATOR ASSEMBLIES</b>	
34455	2SFX series pumps
36086	2SF series pumps
76560	1560



## Flow Switches

Flow control device used to shut down pump when there is no flow to Inlet of pump or to shut down system when trigger on gun is released.

- Mount to discharge fitting of unloader to monitor change in flow.
- Use in conjunction with a relay switch.

MODEL	FLOW RANGE gpm/lpm	MAXIMUM PRESSURE psi/bar	MAXIMUM VOLTAGE/AMPS	PORTS Inlet/Discharge
33786	1.6 - 8.0/6.0 - 30	5100/350	230/3	3/8" BSPF
33776	1.3 - 7.0/4.9 - 26.5	3500/240	250/1	3/8" BSPM



# Specialty Accessories



## Auto Shut-Off Assemblies

Used to automatically shut off system when trigger gun is released or nozzle is closed.

- Assembly includes a pair of pressure switches, mechanical relay, electrical box and toggle switch.
- Higher horsepower units use a magnetic motor starter and overload heaters.

MODEL	HORSEPOWER/ PHASE	MAXIMUM VOLTS	PRESSURE SWITCH MODELS	MECHANICAL RELAY MODEL	STARTER
34870	2/1	115	31615, 31625	34542	NA
34871	3/1	220	31615, 31625	34543	NA
34944	5/1	230	31625, 31640	NA	34938
31620	5/3	230	31625, 31640	NA	34938



## LPS Monitors

Designed to sense water leakage past the low pressure seals.

- Can configure the monitor to PLC or PC based systems.
- Light option to alert maintenance personnel when pump seal replacement is required.

MODEL	USED ON PUMP MODELS
<b>PLC/PC INTERFACE FOR 15 AND 18 FRAME PLUNGER PUMPS</b>	
30664	Plunger pumps: 650 thru 1861K
<b>INDICATOR LIGHT FOR 15 AND 18 FRAME PLUNGER PUMPS</b>	
30664.120AC	Plunger pumps: 650 thru 1861K
<b>PLC/PC INTERFACE FOR 25 FRAME PISTON, 25,28,35 AND 38 FRAME PLUNGER PUMPS</b>	
30290, 30292	Piston pumps: 1520 thru 2521 Plunger pumps: 2530 thru 2831K, 3501 thru 3560, 3801 thru 3841K
<b>INDICATOR LIGHT FOR 25 FRAME PISTON, 25,28,35 AND 38 FRAME PLUNGER PUMPS</b>	
30290.120AC	Piston pumps: 1520 thru 2521 Plunger pumps: 2530 thru 2831K, 3501 thru 3560, 3801 thru 3841K

## Float Valves

Maintains adequate liquid level in reservoir to assure consistent flow to pump inlet.

- Adjustable or preset models available.
- Compact and easy to install.



MODEL	MAXIMUM FLOW gpm/lpm	MAXIMUM INLET PRESSURE psi/bar	INLET PORT	INTERNAL BODY
<b>ADJUSTABLE</b>				
31013	7.1/27	145/10	3/8" BSPM	Brass
<b>PRESET</b>				
32010	8.0/30	145/10	3/4" BSPM	Polyethylene



# Pressure Switches

Pressure activated control device to control on-off operation of low amp system components.

- Non-adjustable, preset pressure setting for consistent system protection.
- 3 wire construction for either normally open or normally closed operation.



MODEL	MAXIMUM PRESSURE psi/bar	ENGAGING PRESSURE psi/bar	VOLTAGE RANGE	MAXIMUM AMP	INLET PORT
STAINLESS STEEL - NPT PORTS					
31615	3650/250	220/15	12-250	6	1/4" NPTM
31625	3650/250	360/25	12-250	6	1/4" NPTM
31640	3650/250	580/40	12-250	6	1/4" NPTM
STAINLESS STEEL - BSP PORTS					
39132	3650/250	580/40	12-250	6	1/4" BSPM
32721	5800/400	650/45	12-250	6	3/8" BSPM

## Custom Pumping Systems

YOU DEFINE. WE DESIGN AND DELIVER.

For over 25 years, Cat Pumps has been the industry leader in providing customers with quality custom-engineered pumping systems to meet a wide range of application needs. Each custom system is built to meet the needs of the individual customer with the assistance and expertise from our technical sales and engineering team. They will assist in all phases of the build including gathering application information, component/configuration selection, building and testing as well as aftersales support.



By choosing Cat Pumps for your next custom system need you can greatly save time and expenses of:

- Initial Design
- Multiple Source Buying
- Fabrication
- Assembly
- Testing





# Operator Controls



## Guns and Lance Assemblies

Ergonomic construction with smooth trigger action reducing operator fatigue.

- Special safety lock to prevent unintentional operation.
- Stainless Steel seat and ball assures thousands of continuous cycles.

MODEL	MAXIMUM FLOW gpm/lpm	MAXIMUM PRESSURE psi/bar	TYPE	PORTS	
				INLET	DISCHARGE
BRASS (INTERNAL BODY)					
33425	8.0/30.0	2900/200	Front Load	3/8"NPTF	1/4"NPTF
76150	8.0/30.0	3000/210	Shut-Off	3/8"NPTF	1/4"NPTF
76151	8.0/30.0	3000/210	Weep	3/8"NPTF	1/4"NPTF
35150	8.0/30.0	5000/345	Shut-Off	3/8"NPTF	1/4"NPTF
35151	8.0/30.0	5000/345	Weep	3/8"NPTF	1/4"NPTF
31260	8.0/30.0	5100/350	Pressure Compensating	3/8"NPTF	1/4"NPTF
31137	10.0/38.0	4500/310	Horizontal	3/8"NPTF	1/4"NPTF
31811	10.5/40	4500/310	Shut-Off	3/8"NPTF	1/4"NPTF
36140	10.5/40	4500/310	Shut-Off	3/8"NPTF	1/4"NPTF
36141	10.5/40	4500/310	Weep	3/8"NPTF	1/4"NPTF
31265	13/49	3650/250	Pressure Compensating	3/8"NPTF	1/4"NPTF
31675	15/57	15000/1034	Dump	1/2"NPTF	1/4"NPTF
39410	21/80	7250/500	Shut-Off	1/2"BSPF	1/2"BSPF
39415	32/121	1750/120	Shut-Off	1/2"BSPF	1/2"BSPF
39420	53/200	2900/200	Shut-Off	3/4"BSPF	1/2"BSPF
STAINLESS STEEL (INTERNAL BODY)					
36126	10.0/38.0	4000/275	Shut-Off	3/8"NPTF	1/4"NPTF
33600	10.5/40	5800/400	Pressure Compensating	3/8"NPTF	1/4"NPTF
DUMP GUN WITH LANCE					
32300	10.0/38.0	3000/210	Dump w/400 mm Lance	3/8"NPTF	1/8"NPTF
32301	10.0/38.0	3000/210	Dump w/800 mm Lance	3/8"NPTF	1/8"NPTF
STAINLESS STEEL (INTERNAL BODY)					
39411	21/80	7250/500	Shut-Off w/400mm Lance	1/2"BSPF	1/4"BSPF
39412	21/80	7250/500	Shut-Off w/800mm Lance	1/2"BSPF	1/4"BSPF



## Need selection assistance?

### Online

Browse Cat Pumps complete accessory catalog on-line using the product selector at [catpumps.com](http://catpumps.com). Search by model number, performance, material or product type to quickly find what you are looking for.

You can also browse our training section to find system design, installation and maintenance information as well as handy formulas and charts to assist you in all phases of selection and design.

## Lances

A variety of lance types, lengths and materials ready to install to any 1/4" gun.

- Ventilated insulator for operator comfort and safety.
- Durable nozzle protector reducing nozzle and property damage.

MODEL	MAXIMUM FLOW gpm/lpm	MAXIMUM PRESSURE psi/bar	LENGTH Inches/mm	PORTS	
				INLET	DISCHARGE

### ZINC PLATED STRAIGHT TUBE W/HAND GRIP

32264	10.5/40	3650/250	24/600	1/4" BSPM	1/4" BSPM
36267	10.5/40	3650/250	36/900	1/4" BSPM	1/4" BSPM
32268	10.5/40	3650/250	48/1200	1/4" BSPM	1/4" BSPM

### ZINC PLATED TUBE W/VENTED GRIP AND NOZZLE PROTECTOR

31017	10.5/40	3650/250	27/900	1/4" BSPM	1/4" NPTF
33201*	10.5/40	3650/250	35/890	1/4" BSPM	1/4" BSPF
32036	10.5/40	3650/250	36/900	1/4" NPTM	1/4" NPTF
32031	10.5/40	3650/250	36/900	1/4" BSPM	1/4" NPTF
32032	10.5/40	3650/250	48/1200	1/4" BSPM	1/4" NPTF

\* Dual Lance

### STAINLESS STEEL TUBE W/VENTED GRIP AND NOZZLE PROTECTOR

31219	8.0/30.0	5100/350	32/812	1/4" NPTM	1/4" NPTF
31220	8.0/30.0	5100/350	42/1065	1/4" NPTM	1/4" NPTF
32042	10.5/40	3650/250	36/900	1/4" NPTM	1/4" NPTF
33200*	10.5/40	3650/250	43/1090	1/4" BSPM	1/4" BSPF

\* Dual Lance

### LANCE ASSEMBLY

33220	8.0/30	2900/200	12/305	1/4" NPTM	Coupler
33221	8.0/30	2900/200	20/508	1/4" NPTM	Hex Adapter
32798	10.0/38	3000/210	15/380	M18	1/8" NPTF
33798	10.0/38	3000/210	39/990	M18	1/8" NPTF
32437**	21/80	7250/500	16/406	1/2" BSPM	1/4" NPTF
32438**	21/80	7250/500	32/812	1/2" BSPM	1/4" NPTF

\*\* 304 Stainless steel



## Industry Leading Customer Service

Cat Pumps knowledgeable and experienced customer service team provides assistance with order information as well as technical assistance in product selection, installation, maintenance support, pump repair and general system troubleshooting.

Live support available M – F, 8:00 a.m. to 5:00 p.m. CST at 763-780-5440.

Email: [techsupport@catpumps.com](mailto:techsupport@catpumps.com)



# Operator Controls



## Nozzles

Applicator/orifice defines rate and pattern of fluid.

- Easily mounts to a 1/4" Lance.
- Nozzle types available – change over, rotating and turbo.
- Durable ceramic nozzle/insert for greater resistance to wear.

MODELS	MAXIMUM FLOW gpm/lpm	MAXIMUM PRESSURE psi/bar	INLET PORT
--------	-------------------------	-----------------------------	------------

### CHANGE OVER NOZZLE WITH TWO 1/4"NPTF NOZZLE HOLDERS

32149	7/26.5	2900/200	1/4"BSPF
-------	--------	----------	----------

MODELS	NOZZLE SIZE	FLOW RANGE gpm/lpm	PRESSURE RANGE psi/bar	INLET PORT
--------	-------------	-----------------------	---------------------------	------------

### TURBO-NOZZLES WITH CERAMIC NOZZLE

7265.35	3.5	1.9-3.0/7.2-11.4	1200-3000/85-210	1/4"BSPF
7265.40	4.0	2.2-3.5/8.3-13.2	1200-3000/85-210	1/4"BSPF
7265.45	4.5	2.4-3.9/9.0-14.8	1200-3000/85-210	1/4"BSPF
7265.50	5.0	2.8-4.4/10.6-16.7	1200-3000/85-210	1/4"BSPF
7265.55	5.5	3.0-4.8/11.1-18.2	1200-3000/85-210	1/4"BSPF
7265.60	6.0	3.2-5.2/12.1-19.7	1200-3000/85-210	1/4"BSPF
7265.65	6.5	3.6-5.7/13.6-21.6	1200-3000/85-210	1/4"BSPF
7270.35	3.5	2.5-3.9/9.5-14.8	2000-5000/140-345	1/4"BSPF
7270.45	4.5	3.0-5.0/11.4-18.9	2000-5000/140-345	1/4"BSPF
7270.55	5.5	3.8-6.2/14.4-23.5	2000-5000/140-345	1/4"BSPF
7270.65	6.5	4.6-7.3/17.4-27.6	2000-5000/140-345	1/4"BSPF
7270.80	8.0	5.6-8.9/21.2-33.7	2000-5000/140-345	1/4"BSPF
7270.90	9.0	6.4-10/24.2-37.9	2000-5000/140-345	1/4"BSPF

### ROTATING NOZZLES WITH CERAMIC INSERT

7625.30	3.0	1.6-2.9/6.1-11.0	1200-3650/85-250	1/4"BSPF
7625.35	3.5	1.9-3.3/7.2-12.5	1200-3650/85-250	1/4"BSPF
7625.40	4.0	2.2-3.8/8.3-14.4	1200-3650/85-250	1/4"BSPF
7625.45	4.5	2.4-4.3/9.1-16.3	1200-3650/85-250	1/4"BSPF
7625.50	5.0	2.8-4.8/10.6-18.2	1200-3650/85-250	1/4"BSPF
7625.55	5.5	3.0-5.2/11.4-19.7	1200-3650/85-250	1/4"BSPF
7625.60	6.0	3.2-5.7/12.1-21.6	1200-3650/85-250	1/4"BSPF
7625.65	6.5	3.6-6.2/13.6-23.5	1200-3650/85-250	1/4"BSPF
7625.70	7.0	3.8-6.7/14.4-25.4	1200-3650/85-250	1/4"BSPF
7625.80	8.0	4.4-7.7/16.7-29.1	1200-3650/85-250	1/4"BSPF
7632.35	3.5	2.8-3.9/10.6-14.8	2600-5100/180-350	1/4"BSPF
7632.40	4.0	3.2-4.5/12.1-17.0	2600-5100/180-350	1/4"BSPF
7632.45	4.5	3.6-5.1/13.6-19.3	2600-5100/180-350	1/4"BSPF
7632.50	5.0	4.0-5.6/15.1-21.2	2600-5100/180-350	1/4"BSPF
7632.55	5.5	4.4-6.2/16.7-23.5	2600-5100/180-350	1/4"BSPF
7632.60	6.0	4.8-6.7/18.2-25.4	2600-5100/180-350	1/4"BSPF
7632.65	6.5	5.2-7.3/19.7-27.6	2600-5100/180-350	1/4"BSPF
7632.70	7.0	5.6-7.9/21.2-29.9	2600-5100/180-350	1/4"BSPF

## Need selection help?

If psi and nozzle gpm is known, then nozzle number can be calculated as follows:

$$\text{Nozzle number} = \text{gpm} \times \sqrt{\frac{4000}{\text{psi}}}$$

If psi and nozzle number is known, then gpm can be calculated as follows:

$$\text{gpm} = \text{nozzle number} \times \sqrt{\frac{\text{psi}}{4000}}$$

If gpm and nozzle number is known, then psi can be calculated as follows:

$$\text{psi} = \left( \frac{\text{gpm}}{\text{nozzle number}} \right)^2 \times 4000$$

A nozzle selection chart can also be found online at [catpump.com](http://catpump.com) in the reference documents section.

## Foamers

Draws chemical and air to create thick foam.

- Lance and chemical bottle can be fitted to a standard 1/4" gun.
- Convenient chemical injector adjustment knob or handle for adjusting chemical draw.
- Stainless steel orifice and FPM o-rings for chemical compatibility.



MODELS	MAXIMUM FLOW gpm/lpm	MAXIMUM PRESSURE psi/bar	INLET PORT
<b>FOAMER WITHOUT BOTTLE</b>			
32017	6.5/25	2900/200	1/4" BSPF
<b>FOAMER WITH 1 LITER BOTTLE</b>			
39234	6.5/25	2900/200	1/4" BSPF
<b>FOAMER WITH 2 LITER BOTTLE</b>			
39196	6.5/25	2900/200	1/4" BSPF

## Chemical Injectors

Provides and regulates chemicals into pump stream.

- Must be used with change over or adjustable nozzle to activate chemical draw with reduced downstream pressures.
- Mount directly to unloader or in-line on discharge plumbing.



MODEL	ORIFICE SIZE	FLOW RANGE	MAXIMUM PRESSURE	PORTS	
	mm			gpm/lpm	psi/bar
BRASS - ADJUSTABLE					
7182	1.8	3-4/11.4-15	3500/245	3/8"NPTM	3/8"NPTM
7192	1.8	3-4/11.4-15	3500/245	M18 X 1.0	3/8"NPTM
7183	2.1	4-5/15-19	3500/245	3/8"NPTM	3/8"NPTM
7193	2.1	4-5/15-19	3500/245	M18 X 1.0	3/8"NPTM
7184	2.3	5-6/19-23	3500/245	3/8"NPTM	3/8"NPTM
7194	2.3	5-6/19-23	3500/245	M18 X 1.0	3/8"NPTM
7224	2.3	5-6/19-23	3500/245	M22 X 1.5	3/8"NPTM
BRASS - FIXED					
7231	1.8	2.0/7.6	3145/217	M18 X 1.0	3/8"NPTM
7242	2	2.9/12.9	2500/175	M18 X 1.0	3/8"NPTM
7234	2.3	2-5/7.6-19	3200/220	M22 X 1.5	3/8"NPTM
7232	2.1	3/11.4	3145/217	M18 X 1.0	3/8"NPTM
7332	2.1	3-4/11.4-15	3000/210	M18 X 1.0	3/8"NPTM
7243	2.1	3-5/11.4-19	4000/275	M22 X 1.5	3/8"NPTM
7345	2.1	3-5/11.4-19	4000/275	M18 X 1.0	3/8"NPTM
7367	2.1	3-5/11.4-19	4000/275	M20 X 1.0	3/8"NPTM
STAINLESS STEEL - ADJUSTABLE					
7722	1.8	3-4/11.4-15	3500/245	3/8"NPTM	3/8"NPTM
7723	2.1	4-5/15-19	3500/245	3/8"NPTM	3/8"NPTM
7724	2.3	5-6/19-23	3500/245	3/8"NPTM	3/8"NPTM

# Operator Controls



## Pulse Pumps

High pressure injection downstream from the pump.

- Eliminates harsh chemicals going through pump.
- Simple field retrofit of existing pumps.

Model	FLOW RANGE gpm/lpm	PRESSURE RANGE psi/bar	PORTS	
			Inlet/Discharge	Manifold

### PULSE PUMPS FOR PISTON PUMPS

6300	.25 gallon/min/1 Liter/min	1000/70	1/4" NPTM	1/2" NPTM
6305	1 gallon/min/3 Liter/min	1000/70	3/8" NPTM	3/4" NPTM

Model	FLOW RANGE gph/lph	PRESSURE RANGE psi/bar	PORTS	
			Inlet	Discharge

### PULSE PUMPS FOR PLUNGER AND PISTON PUMPS

6350	1.0-12/3.7-45.4	500-3000/35-210	1/4" Hose Barb	1/8" NPTF
------	-----------------	-----------------	----------------	-----------

Note: Contact Cat Pumps for selection of Adapter Assembly to fit your pump model.

# Lubrication Accessories



## Crankcase Oil

Genuine Cat Pumps crankcase oil provides maximum life and performance of your Cat Pump.

- Custom blend, premium grade, petroleum-based hydraulic oil for all Cat Pumps
- Anti-wear additives protects metal to metal drive surfaces extending drive life
- High oxidative and chemical stability resists deposit formations and provides consistent fluid performance
- Premium anti-corrosion additives offer protection in the most rigorous operating environments

PART NUMBER	CAPACITY	PUMP MODELS
-------------	----------	-------------

### OIL

6100	Case - 12-21ounce bottles	All piston and plunger pumps
6105	Twin pack - 2 x 2.5 gallons	All piston and plunger pumps
6107	Bottle - 21 ounces	All piston and plunger pumps
6109	Drum - 30 gallons	All piston and plunger pumps
6115	Pail - 5 gallons	152R060/C, 152R080/C, 152R100/C, 157R060/080
6116	Drum - 16 gallons	152R060/C, 152R080/C, 152R100/C, 157R060/080

### OILERS GRAVITY FEED WITH 1/4" NPTM THREADS

30278	1 ounce	2520/C, 2510/11, 2530-2537, <b>Except</b> 2831/K, 35/38 Series, <b>Except</b> 3541/C, 3545, 3841/K
30429	10 ounces	6020, 6040, 6760-6777, <b>Except</b> 6747 6861/K, <b>Except</b> 6801/K-6841/K

## Oil Drain/Level Indicator Kits

Easily monitor crankcase oil level at-a-glance and improve pump maintenance.

- Conveniently monitor oil when existing bubble gauge is obscured.
- Oil drain kit can be mounted at desired location for easy maintenance.

MODEL	USED ON PUMP MODELS
<b>OIL LEVEL INDICATOR</b>	
76144	Piston pumps: 1520 thru 6041 Plunger pumps: 2510 thru 6861K EXCEPT 35 and 38 Frame series
<b>OIL LEVEL INDICATOR W/DRAIN KIT</b>	
76334	All Piston and Plunger pumps and 66DX, EXCEPT Plunger pumps 2DX, 2SF, 2SFX, 3DNX, 3DX, 3SP, 3SPX, 4DNX and 4SF series
76074	All stainless steel or nickel aluminum bronze pumps EXCEPT Plunger pumps 2DX, 2SF, 2SFX, 3DNX, 3SP, 3SPX, 4DNX 4SF and 66DX series
<b>DRAIN KITS</b>	
34314	Piston pumps: 6020 thru 6041 Plunger pumps: 3501 thru 3560, 3801 thru 3841K, 6747 Thru 6777, and 6801 thru 6861K
34334	All piston and plunger pumps and 66DX, EXCEPT plunger pumps 2DX, 2SF, 2SFX, 3DNX, 3DX, 3SP, 3SPX, 4DNX and 4SF series
990394	Plunger pumps: 2DX, 2SF, 2SFX, 3DNX, 3DX, 3SP, 3SPX, 4DNX and 4SF series



## Gear Lube

Maximize life with genuine Cat Pump gear lube.

- Low friction and operating temperature for low wear extending gear box life.
- Anti-wear, anti-rust, anti-corrosion chemistry to extend gearbox life.
- Excellent oxidation and thermal stability extending the fluid life.
- Used on all Cat Pumps gearbox pumps except 3CP1120G (Cat Oil is used instead of gear lube).

PART NUMBER	CAPACITY	PUMP MODELS
<b>GEARLUBE</b>		
6110	Bottle - 16 ounces	34-35G1, 45G1, 51-70G1, 3CP1120G, 5CP3120G1, 5CP5140G1,
6111	Case, 12-16 ounce bottles	5CP5150G1, 5CP6120G1, 5CP6190G1, 7CP6110G1, 7CP6111G1



## Anti-seize and Sealants

Sealant and anti-seize ensure proper pump operation.

- Anti-Seize protects metal to metal surfaces from galling, seizing, friction and wear.
- Sealant is used to fill between mating surfaces within the manifold.

PART NUMBER	CAPACITY	PUMP MODELS
<b>ANTI-SEIZE AND SEALANTS</b>		
6106	2 milliliters	Anti-seize for pump shafts and keys - all plunger pumps
6119	2 ounces	Anti-seize for threads - all stainless steel plunger pumps
6124	3 ounces	Liquid gasket for o-rings, seals - all plunger pumps





# Pump Accessories



## Protectors – Shaft and Oil Cap

Safety devices to eliminate exposure to rotating pump shaft and to minimize water leakage into pump.

- Shaft protector not included with pump unless otherwise noted.
- Oil cap protector not included with pump except 35/38 series pumps.

PART NUMBER	MATERIAL	PUMP MODELS
<b>SHAFT PROTECTORS</b>		
25130	STCP	230-277, 280, 290, 333, 430
26516	STCP	2520/C, 2510/11, 2530-2537, 2831/K
29445	AL	6020, 6040, 6747, 6760-6777, 6801/K, 6811/K, 6821/K, 6831/K, 6841/K, 6861/K <b>Included with pump.</b>
30764	NY	650, 660, 1050, 1530, 1540E, 1560
30764S	NY*	661C, 661D, 1051, 1051C, 1051D, 1057, 1531, 1541, 1861/K, 1810/K
43139	STCP	621, 623, 820, 821, 1010, 1011
43256	STCP	530, 550
44516	NY	3501/C, 3507/C, 3511/C, 3517/C, 3520/C, 3521/C, 3527, 3531/C, 3535/C, 3537, 3541/C, 3545, 3560, 3801/K, 3811/K, 3821/K, 3831/K, 3841/K <b>Included with pump.</b>
118672	STCP	310-350S, 311-357, 3CP1120-1140, 3CP1221-1241, 5CP2120W/2150W, 5CP3120, 5CP6120-6190, 5CP6221/6251
120220	STCP	7CP6170

\* Nylon protectors w/ two stainless screws.

### OIL CAP PROTECTORS

Oil fill cap protector for prevention of water entering into crankcase. Not included with pump except on 35 and 38 series pumps.

828710	PE	All piston and plunger pumps <b>except</b> the 1CX, 2DX, 2SF, 2SFX, 3CP, 3DNX, 3DX, 3SPX, 4DNX, 4SF, 5CP, 66DX, 67DX and 3CP/5CP series pumps.
--------	----	--

Material codes: AL = Aluminum, NY = Nylon, PE = Polyethylene, STCP = Steel/Chrome Plated

Dedicated Engineering and advanced Research & Development teams take new product designs from feasibility to reality using the latest design and testing technologies. All products are life tested to ensure they meet Cat Pumps' rigorous quality standards.





## Keys – Direct Drive

Provides alignment and secures pump shaft to motor shaft or hub/pulley.

- Keys supplied with Cat Pumps.
- Keys supplied with gearboxes and flexible couplings.



PART NUMBER	SIZE (MM) UNLESS AS NOTED	PUMP MODELS
30050	3/16" x 3/16" x 1 1/4"	2SF Electric, Gas and Stainless Steel Series
30088	1/4" x 1/4" x 1 3/8"	Flexible Couplings: 8220, 8225, 8230
34050*	3/16" x 3/16" x 27mm	2DX.MIST, 2DX20ES, 2DX30GS, 3DNX25GSI/27GSI, 3DX29GSI/30GSI, 4DNX25GSI/27GSI
44294	3/16" x 3/16" x 1 3/4"	Gearboxes (engine side): 8010, 8075
44455	1/4" x 1/4" x 2 5/32"	4SF Gas Series, Gearboxes (engine side): 8051, 8061, 8065, 8068, 8071, 8076, 8077, 8081
44459	8 x 7 x 24	Gearboxes (pump side): 8051, 8071
45217**	1/4" x 1/4" x 64mm	3SPX30G1I, 66DX30G1I/35G1I/40G1I
46076*	1/4" x 1/4" x 2 1/2" Tapered	4SF Electric Series
49411	1/4" x 1/4" x 59mm	67DX39G1I
57352	5 x 5 x 21	Gearboxes (pump side): 8010, 8075
76059*	1/8" x 1/8" x 1 1/2"	1CX Electric Series
101814	6 x 6 x 27	Gearboxes (pump side): 8061, 8065, 8068, 8076, 8077, 8081
547162	3/16" x 3/16" x 1 1/2"	3SPX35GEI
831844**	1/4" x 1/4" x 56mm	3SPX30G1I

Note: \* Hardened \*\* Surface Hardened

## Keys – Belt Drive

Provides alignment and secures pump shaft to hub/pulley.

- Keys not supplied with pump.

PART NUMBER	SIZE (MM) UNLESS AS NOTED	PUMP MODELS
30047	5 x 5 x 24	280, 290, 333, 430, 230-277, 3CP1120-1140, 1221-1241
30057	6 x 6 x 25 (round end)	323, 390, 45, 310-350S, 311-357, 5CP2120W-2150W, 5CP3120/3120CSS, 5CP5120-5140CSS, 5CP6120-6190, 5CP6221-6251 and Clutch models: 34962/63, 34970/80
30067	8 x 7.25 x 25	51-70, 530, 550, 700, 781/K, 650-661D, 1050-1057, 1530/31, 1540E/41, 1810/K, 1861/K, 7CP6110-7CP6171
30089	5 x 5 x 36.5	Clutch models: 34960/961, 34964/965
34021	10 x 8 x 70	3501/C, 3507/C, 3511/C, 3517/C, 3520/C, 3521/C, 3527, 3531/C, 3535/C, 3537, 3541/C, 3545, 3560, 3801-3841K
35034	6 x 8 x 26 Step	Clutch model: 34299
43048	14 x 9 x 90	6020, 6040, 6747, 6760-6777, 6801-6861K
50146	7 x 7 x 40	621, 623, 820, 821, 1010, 1011
890601	28 x 170 Step	152R060/C, 152R080/C, 152R100/C, 157R060, 157R080
890602	28 x 16 x 170	152R060/C, 152R080/C, 152R100/C, 157R060, 157R080
990036	8 x 7 x 40	2520/C, 1530/31, 1540E/41, 1560, 2510/11, 2530-2537, 2831/K
990069	8 x 6.35 x 40	Clutch model: 34563
991036	8 x 7 x 36	Clutch model: 34628

# Pump Accessories



## Rail, Direct Mount and Complete Mounting Assemblies

Mount pump onto a secure, horizontal base with either rail assemblies or direct mount assemblies.

- Rail assembly, direct mount assembly or complete mounting assembly not included with pump unless otherwise noted.
- Use direct mount assembly when mounting block or flat base is used or pulley hanges over base edge.

PART NUMBER	PUMP MODELS
<b>RAIL ASSEMBLIES - STEEL/ZINC PLATED</b>	
126604	6020, 6040, 6747, 6760 - 6777, 6801/K, 6811/K, 6821/K, 6831/K, 6841/K, 6861/K <b>Included with pump</b>
30611	333, 430, 323, 390, 310 - 350S, 311 - 357, 530, 550, 700, 781/K, 31, 45, 53-70, 5CP2120W-2150W, 5CP3120/3120CSS, 5CP5120-5140CSS, 5CP6120-6190, 5CP6221-6251
30612	280, 290, 230-277, 3CP1120-1140, 3CP1221-1241
30613	623-1010, 650-661D, 1050-1057, 1530/31, 1540E/41, 1560, 1861/K, 1810/K, 7CP6110-6171
30614	2520/2520C, 2510/11, 2530-2537, 2831/K
30637	5CP2120W-2150W, 5CP3120/3120CSS, 5CP5120-5140CSS, 5CP6120-6190, 5CP6221-6251
30645	530, 550, 45, 53-70, 700, 781/K
92674	3501/C, 3507/C, 3511/C, 3517/C, 3520/C, 3521/C, 3527, 3531/C, 3535/C, 3537, 3541/C, 3545, 3560, 3801/K, 3811/K, 3821K, 3831/K, 3841/K
990550	650-661D, 1050-1057 <b>For Diesel or Gas mounts</b>
<b>DIRECT MOUNT ASSEMBLIES - STEEL/ZINC PLATED</b>	
30243	333, 430, 323, 390, 310-350S, 311-357, 530, 550, 700, 781/K, 30-35, 45, 51-70, 5CP2120W-2150W, 5CP3120/3120CSS, 5CP5120-5140CSS, 5CP6120-6190, 5CP6221-6251
30264	623-1010, 650-661D, 1050-1057, 1530/31, 1540E/41, 1560, 1861/K, 1810/K, 7CP6110-6171
34018	3520/C, 3535, 3545, 3560
34039*	3501/C, 3507/C, 3511/C, 3517/C, 3521/C, 3527, 3531/C, 3537, 3541/C, 3801/K, 3811/K, 3821/K, 3831/K, 3841/K
Note: * 304 stainless steel	
<b>MOUNTING ASSEMBLIES - INCLUDES: RAILS, KEY, PULLEY/HUB AND SHAFT PROTECTOR</b>	
30641	3CP1120-1140, 3CP1221-1241
30651	280, 290, 230-277
30652	333, 430
30653	623-1010
30659	323, 390, 310-350S, 311-357, 5CP2120W-5CP2150W, 5CP3120/CSS, 5CP5120-5CP5140CSS, 5CP6120-5CP6190, 5CP6221-6251
30660	530, 550, 700, 781/K, 53-70
30661	650-661D, 1050-1057, 1530/31, 1540E/41, 1560, 1861/K, 1810/K

# Drive Accessories

## Bell Housing and Flexible Coupling

Compact direct mounting to electric motors reduces space requirements.

- Coupling assembly includes metric and standard coupler halves, spyder and keys.
- Special urethane flexible spyder designed for extended life with high temperature and high RPM



MOTOR FRAME	PART NUMBER	PUMP MODELS
<b>BELL HOUSING</b>		
56C, 143-145TC	34121	230-277
56C, 143-145TC	34422	3CP1120-1140, 3CP1221-1241
143-145TC	35421	5CP2140WCS-2150W, 5CP6241CS-6251
182-184TC	34126	230-277
182-184TC, 213-215TC*	34131	340-357
182-184TC, 213-215TC*	34423	3CP1120-1140, 3CP1221-1241
182-184TC, 213-215TC*	34424	5CP2140WCS-2150W, 5CP6241CS-6251
182-184TC, 213-215TC, 254-256TC*	31570	7CP6110-6171

Note: \* Adapter kit PN 990213 must be used to convert motor frame to 213-215TC or 254-256TC

SHAFT TO SHAFT DIMENSIONS	PART NO.	MOTOR FRAME	PUMP MODELS
<b>FLEXIBLE COUPLING</b>			
M16.5 x 5/8"	8215	56C	230-277, 3CP1120-1140, 3CP1221-1241
M16.5 x 7/8"	8210	143-145TC	230-277, 3CP1120-1140, 3CP1221-1241
M16.5 x 1 1/8"	8220	182-184TC	230-277, 3CP1120-1140, 3CP1221-1241
M16.5 x 1 1/8"	8225	182-184TC	230-277, 3CP1120-1140, 3CP1221-1241
M16.5 x 1 3/8"	8270	213-215TC	230-277, 3CP1120-1140, 3CP1221-1241
M20 x 7/8"	8260	143-145TC	340-357, 5CP2140WCS-2150W, 5CP6241CS-6251
M20 x 1 1/8"	8230	182-184TC	340-357, 5CP2140WCS-2150W, 5CP6241CS-6251
M20 x 1 3/8"	8275	213-215TC	340-357, 5CP2140WCS-2150W, 5CP6241CS-6251
M24 x 1 1/8"	8370	182-184TC	7CP6110-7CP6171
M24 x 1 3/8"	8375	213-215TC	7CP6110-7CP6171
M24 x 1 5/8"	8380	254-256TC	7CP6110-7CP6171





## Motorized Flange Mount

Completely assembled unit with pump, flange mount and motor for use in limited space requirements.

- Eliminate assembly time and multiple sourcing.
- All motors are 60HZ Contact Cat Pumps for 50HZ motor options.

PUMP MODELS	FLANGE PART NO.	MOTOR PART NO. / SPECS	MOTORIZED PUMP UNITS
<b>STANDARD PLUNGER PUMPS</b>			
230, 231, 237	8020	8023ES - 1.5HP/1PH	230BD151, 231BD151, 237BD151
230 - 277	8021	8024ES - 3.0HP/1PH	230BD31, 231BD31, 237BD31, 240BD31, 241BD31, 247BD31, 270BD31, 271BD31, 277BD31
230 - 277	8021	8025ES - 3.0HP/3PH	230BD33, 231BD33, 237BD33, 240BD33, 241BD33, 247BD33, 270BD33, 271BD33, 277BD33
	8022	8026ES - 3.0HP/1PH	340BD31, 341BD31, 347BD31, 350BD31, 351BD31, 357BD31
340, 340B, 340S, 341, 347, 350, 350B, 350S, 351, 357	8022	8027ES - 3.0HP/3PH	340BD33, 341BD33, 347BD33, 350BD33, 351BD33, 357BD33
	8022	8028ES - 5.0HP/1PH	340BD51, 341BD51, 347BD51, 350BD51, 351BD51, 357BD51
	8022	8029ES - 5.0HP/3PH	340BD53, 341BD53, 347BD53, 350BD53, 351BD53, 357BD53
<b>CP SERIES PLUNGER PUMPS</b>			
3CP1130, 3CP1231	8001	8023ES - 1.5HP/1PH	3CP1130BD151, 3CP1231BD151
3CP1120-1140, 3CP1221, 1241	8002	8024ES - 3.0HP/1PH	3CP1120BD31, 3CP1130BD31, 3CP1140BD31, 3CP1221BD31, 3CP1241BD31
	8002	8025ES - 3.0HP/3PH	3CP1120BD33, 3CP1130BD33, 3CP1140BD33, 3CP1221BD33, 3CP1241BD33
3CP1120, 1130, 1140	8002	8038ES - 6.0HP/3PH	3CP1120BD63, 3CP1130BD63, 3CP1140BD63
	8002	8041ES - 6.0HP/1PH	3CP1120BD61, 3CP1130BD61, 3CP1140BD61
	8003	8026ES - 3.0HP/1PH	5CP2140WBD31, 5CP2150WBD31, 5CP6251BD31
5CP2140WCS, 5CP2150W, 5CP6251	8003	8027ES - 3.0HP/3PH	5CP2140WBD33, 5CP2150WBD33, 5CP6251BD33
	8003	8028ES - 5.0HP/1PH	5CP2140WBD51, 5CP2150WBD51, 5CP6251BD51
	8003	8029ES - 5.0HP/3PH	5CP2140WBD53, 5CP2150WBD53, 5CP6251BD53
5CP2140WCS, 5CP2150W	8003	8040ES - 6.0HP/3PH	5CP2140WBD63, 5CP2150WBD63
	8003	8042ES - 6.0HP/1PH	5CP2140WBD61, 5CP2150WBD61

## Gearboxes

Easily mounts directly to a standard 1" gas engine without need for pulleys and belts.

- Retrofit an existing pump with gearbox.
- Pump models with gearboxes available as noted.



MODEL	PUMP MODELS
8051	51G1, 58G1
8061	34G1, 35G1
8065	45G1
8071	56G1, 59G1, 60G1, 70G1, 700G1
8075	3CP1120G, 3CP1211G
8076	5CP3120CSSG1, 5150G1, 5CP6120CSSG1, 6190G1
8081	7CP6110G1, 7CP6111G1
8086	5CP5140CSSG1

Note: G1 = 1" Gearbox

## Hollow Shaft Direct Drive Pumps

Cat Pumps has a complete offering of hollow shaft direct-drive pumps that mount directly to electric-motor or gas engine.

SHAFT DIAMETER	MOTOR FACE	PUMP MODELS
<b>ELECTRIC MOTOR DRIVEN</b>		
1/2"	Contact Cat Pumps	1CX013ELS.MIST, 1CX025ELS.MIST, 1CX05ELS.MIST
5/8"	56C	2DX20ES, 2DX05ELS.MIST, 2DX15ES.MIST, 2DX20ES.MIST, 2DX27ES.MIST, 2DX30ES.MIST, 2SF10ES, 2SF20ES, 2SF22ELS, 2SF22ES, 2SF29ELS, 2SF30ES, 2 SF35ES, 2SF05SEEL, 2SF10SEEL, 2SF15SEEL, 2SF22SEEL, 2SF25SEEL, 2SF29SEEL, 2SF35SEEL, 2SF42SEEL, 2SFX20ES, 2SFX22ES, 2SFX30ES
3/4"	56C	2SF30GES, 2SF35GES, 2SFX30GES, 3SPX35GEI
1 1/8"	184TC/215TCZ	4SF40ELS, 4SF45ELS, 4SF50ELS

SHAFT DIAMETER	MOUNTING FLANGE	PUMP MODELS
<b>GAS ENGINE DRIVEN</b>		
3/4"	SAE J609*	2DX30GS, 2SF30GS, 2SF35GS, 2SFX30GS, 2SFX30GZ, 3DNX25GSI/27GSI, 3DX29GSI, 3DX30GSI, 4DNX25GSI/27GSI
1"	SAE J609**	3SPX30G1I, 4SF35GS1, 4SF40GS1, 4SF45GS1, 4SF50GS1, 66DX30G1I, 66DX35G1I, 66DX40G1I

Note: \* Flange A, Extension 3, Shaft Length-2.296, Pilot-1.625 diameter, Bolt Center-3.625 diameter

Note: \*\* Flange B, Extension 4, Shaft Length-3.250, Pilot-5.750 diameter, Bolt Center-6.500 diameter

Additional direct drive pumps and accessories can be found online at [catpumps.com](http://catpumps.com).

# Drive Accessories



## Hubs and Hub/Key Assembly

**Metric sized hubs to match metric shaft diameter of pump.**

- Contact Cat Pumps for available hubs for motor shafts.
- Metric sized hub with matching metric key for pump shaft only.

PUMP SHAFT DIAMETER (MM)	TYPE	PART NUMBER	PUMP MODELS
--------------------------	------	-------------	-------------

### HUB - STEEL

16.5	H	30943 *	230-277, 280, 290, 333, 430, 3CP1120-140, 3CP1221-1241
20	H	30945 *	310-350S, 323, 390, 311-357, 45, 5CP2120W-2150W, 5CP3120/3120CSS, 5CP5120-5140CSS, 5CP6120-6190, 5CP6221-6251
24	B	997866	530, 550, 700, 781/K, 51-70, 7CP6110-7CP6171
24	B	998755	
24	H	33000 *	
24	P1	990596	
24	Q1	997857	
25	H	30234	621, 623, 820, 821, 1010, 1011
30	B	990012 *	650-661D, 1050-1057, 1530/31, 1540E/41, 1560, 1861/K, 1810/K, 2510/11, 2530-2537, 2831/K
30	H	30059 *	
30	P1	990034	
30	Q1	991711 *	
30	SK	999045	
35	B	990013 *	3501/C, 3507/C, 3511/C, 3517/C, 3520/C, 3521/C, 3527, 3531/C, 3535/C, 3537, 3541/C, 3545, 3560, 3801/K, 3811/K, 3821/K, 3831/K, 3841/K
35	E	998708	
35	P1	990032	
35	Q1	991788	
35	SK	990076	
45	B	990014 *	6020, 6040, 6747, 6760-6777, 6801/K, 6811/K, 6821/K, 6831/K, 6841/K, 6861/K
45	E	990065 *	
45	J	990064	
100	M	990068	152R060/C, 152R080/C, 152R100/C, 157R060, 157R080

Note: \*Add "Z" to part number for zinc plated hub

### HUB AND KEY ASSEMBLY - STEEL

16.5	H	30942	280, 290, 333, 430, 3CP1120-1140, 3CP1221-1241, 230-277
20	H	30944	323, 390, 310-350S, 311-357, 45, 5CP2120W-2150W, 5CP3120/3120CSS, 5CP5120-5140CSS, 5CP6120-6190, 5CP6221-6251
25	H	30284	621, 623, 820, 821, 1010, 1011
30	H	30209	2510/11, 2520/C, 2530-2537, 2831/K

## Need selection help?

**Q. How can I find the RPM needed to get specific GPM (Gallons Per Minute) I want?**

A.  $\text{Desired RPM} = \frac{\text{Rated RPM}}{\text{Desired GPM} \times \frac{\text{Rated GPM}}{\text{Rated RPM}}}$

**Q. I have to run my pump at a certain RPM. How do I figure the GPM I'll get?**

A.  $\text{Desired GPM} = \frac{\text{Rated GPM}}{\text{Desired RPM} \times \frac{\text{Rated GPM}}{\text{Rated RPM}}}$

**Q. Is there a simple way to find the approximate horsepower I'll need to run the pump?**

A. Electric Brake Horsepower (Standard 85% Mech. Efficiency)

$$\text{Required HP}^* = \frac{\text{GPM} \times \text{PSI}}{1460}$$

**Q. What size motor pulley should I use?**

A.  $\text{Pump Pulley (Outer Diameter)} \times \frac{\text{Pump RPM}}{\text{Motor/Engine RPM}}$

\*Consult Engine Manufacturer

## Clutches

Engages/disengages pump and drive device to meet flow demands.

- Reduces amount of time pump is running, saving energy and increasing pump life.
- Broad range of clutches up to 100 ft-lbs torque for high performance.

MODELS	CLUTCH DIAMETER/ NUMBER OF GROOVES	BELT TYPE	PUMP MODELS
34960	7" / 1	A	3CP1120-1140, 3CP1221-1241
34961	7" / 1	A	280, 290, 333, 430, 230-277
34962	7" / 1	A	323, 390, 310-350S, 311-357, 45
34963	7" / 2	A	323, 390, 310-350S, 311-357, 45
34964	7" / 2	A	280, 290, 333, 430, 230-277
34965	7" / 2	A	3CP1120-1140, 3CP1221-1241
34970	7" / 1	A	5CP2120W-2150W, 3120/3120CSS, 5120-5140CSS, 6120-6190, 6221-6251
34980	7" / 2	A	
34299	7.3" / 8	Poly-V, L-Style	53-70, 530, 550, 700, 781/K
34959	7.3" / 8	Poly-V, L-Style	
34971	7.3" / 8	Poly-V, L-Style	7CP6110-7CP6171
34628	12.4" / 1	B	53-70, 530, 550, 700, 781/K
34630	12.4" / 2	B	53-70, 530, 550, 700, 781/K
34563	12.4" / 2	B	650-661D, 1050-1057, 1530/31, 1540E/41, 1560, 1861/K, 1810/K



## Pulleys and Pulley/Hub w/Key

A combination one piece pulley and hub construction for pump shaft installation.

- Contact Cat Pumps for available pulley sizes for either pump or motor side.

PUMP SHAFT DIAMETER (MM)	PART NUMBER	PULLEY DIAMETER NO. OF GROOVES	BELT TYPE	PUMP MODELS
--------------------------	-------------	--------------------------------	-----------	-------------

### PULLEY/HUB COMBINATION WITH TWO SET SCREWS - STEEL/ZINC PLATED

16.5	30032	5" / 1	A	230-277, 280, 290, 333, 430, 3CP1120-1140, 3CP1221-1241
16.5	30048	8" / 1	A/B	230-277, 280, 290, 333, 430, 3CP1120-1140, 3CP1221-1241
20	30058	8" / 1	A/B	323, 390, 310-350S, 311-357, 30, 31, 45, 5CP2120W-2150W, 5CP3120/3120CSS, 5CP5120-5140CSS, 5CP6120-6190, 5CP6221-6251

### PULLEY/HUB COMBINATION WITH TWO SET SCREWS AND KEY ASSEMBLY - STEEL

16.5	30244	8" / 1	A/B	280, 290, 333, 430, 230-277, 3CP1120-1140, 3CP1221-1241
16.5	30246	5" / 1	A	280, 290, 333, 430, 230-277, 3CP1120-1140, 3CP1221-1241
20	30633	8" / 1	A/B	323, 390, 310-350S, 311-357, 30, 31, 45, 5CP2120W-2150W, 5CP3120/3120CSS, 5CP5120-5140CSS, 5CP6120-6190, 5CP6221-6251

### PULLEY ONLY - CAST IRON

HUB SIZE	PART NUMBER	PULLEY DIAMETER NO. OF GROOVES	BELT TYPE	PUMP MODELS
H	30206	10" / 2	A/B	530, 550, 623-1010, 700, 781/K, 650-661D, 1050-1057, 1530/31, 1540E/41, 1560, 1861/K, 1810/K, 2510/11, 2530-2537, 2831/K





# Service Tools



## Wrenches

**Simplifies servicing the crankcase, plunger rod or manifold of your Cat Pump.**

- T-Wrenches used for servicing crankcase or plunger
- L-Wrenches used for servicing valves
- Allen wrenches used for serving SF, CP, DX, DNX series manifolds

### T-WRENCHES

MODEL	25052	25082	44044	25324	25053
Size	M8	M10	M11	M13	M14

### L-WRENCHES

MODEL	44046	44045
Size	M24	M27

### ALLEN WRENCHES

MODEL	30941	33046	33047	33048	33049	34113	34030
Size	M6	M8	M10	M12	M14	7/64"	5/32"



## Pliers

**Quick valve and snap ring removal/installation.**

- Reverse Pliers used for conveniently removing valve seat
- Snap ring pliers used for Captive acceleration tube assemblies

### REVERSE PLIERS

MODEL	30696
-------	-------

### SNAP RING

MODEL	33285
-------	-------



## Oil Gauge Removal Tool

**Quick and easy replacement of crankcase oil gauge**

- Required for replacement of oil gauge

MODEL	44050
Size	M28

## Seal Case Removal Tools

Simplifies seal replacement for various plunger pumps.

- Available as ½" socket or T-wrench

### 1/2" DRIVE SOCKETS

MODEL	33004	33005	33006
Frame	5 Frame	7 Frame	15 Frame

### T-WRENCHES

MODEL	45103	43257	43523
Frame	5 Frame	7 Frame	15 Frame



## Piston Pump Tools

These specialty installation tools minimize risk of damage to cup/seal during replacement.

- Used for piston pumps only

### CUP INSTALLATION

MODEL	16981	22130	43548	43749	27964	43189	15570	27853
Models Used	820	280, 290, 430, 623	320, 323	333	390	1020	1010, 1520	2520

### SEAL INSTALLATION

MODEL	25084	43182	43181
Frame	3, 4 Frame	25 Frame	60 Frame



Need a service guide?

Find Pump Service Manuals online at [catpumps.com](http://catpumps.com)

## ABOUT CAT PUMPS

## Proven Quality, Customer Focused

Founded in 1968, Cat Pumps is a world leader in the design, manufacture and marketing of the most dependable high-pressure positive displacement reciprocating triplex pumps and systems in the market.

With an emphasis on immediate product availability and outstanding customer service, the family-owned and operated business prides itself on a commitment to quality and product reliability as the foundation of its ongoing success. It is the mission to exceed customer expectations for quality, reliability, availability, delivery, technical expertise and aftermarket support to assure the best value in all the industries served.

## LOCATIONS

### Worldwide Headquarters

#### Cat Pumps

1681 94th Lane Northeast  
Minneapolis, MN 55449  
USA

P: 763-780-5440  
F: 763-780-2958  
techsupport@catpumps.com  
www.catpumps.com

#### Territories Served

U.S., Canada

#### International Division

P: 763-780-5440  
F: 763-780-2958  
intlsales@catpumps.com  
www.catpumps.com

#### Territories Served

Africa, Asia, Australia, Central and  
South America, Mexico, Middle East,  
New Zealand, Turkey

#### Cat Pumps International N.V.

Heiveldekens 6A  
2550 Kontich  
Belgium

P: 32 3 450 71 50  
F: 32 3 450 71 51  
cpi@catpumps.be  
www.catpumps.be

#### Territories Served

Western Europe (except U.K.,  
Germany, and Austria)

#### Cat Pump (U.K.) Ltd.

1 Fleet Business Park, Sandy Lane  
Church Crookham  
FLEET, Hampshire GU52 8BF  
England

P: +44 1252 622031  
F: +44 1252 626655  
sales@catpumps.co.uk  
technical@catpumps.co.uk  
www.catpumps.co.uk

#### Territories Served

England, Ireland, Scotland,  
N. Ireland, Wales

#### Cat Pumps Deutschland GmbH

Buchwiese 2, D-65510  
Idstein  
Germany

P: +49 6126 9303 0  
F: +49 6126 9303 33  
catpumps@t-online.de  
www.catpumps.de

#### Territories Served

Austria, Commonwealth of Independent States  
(CIS), Germany and Eastern Europe

## SALES, DISTRIBUTION, SERVICE

Call today for product and application assistance.  
763-780-5440 or visit us at [www.catpumps.com](http://www.catpumps.com)



#### CAT PUMPS

1681 - 94TH LANE N.E. MINNEAPOLIS, MN 55449-4324  
PHONE (763) 780-5440 — FAX (763) 780-2958  
e-mail: techsupport@catpumps.com  
[www.catpumps.com](http://www.catpumps.com)

For International inquiries go to [www.catpumps.com](http://www.catpumps.com) and navigate to the "Contact Us" link.

©2012 Cat Pumps Inc. All rights reserved. All written and visual data contained in this document are based on the latest product information available at the time of publication. Cat Pumps reserves the right to make changes at any time without notice. All other brand names or marks are used for identification purposes and are trademarks of their respective owners.